

a play by Alan Heihnel

fearful symmetry  
fearful symmetry  
fearful symmetry  
fearful symmetry

directed by diego cruz and sean kelly

# fearful symmetry

By Alan Haehnel

Directed by Diego Cruz and Sean Kelly

## Plot Summary

4 girls, all named Mary and each in different countries, live their lives simultaneously until a stranger one day appears, offering a disturbing opportunity that cracks reality and fate.

## Character Descriptions

- Mary, aged 16-17, four different Mary roles available (Red, Blue, Green, Yellow)
- Mom, aged 40s, four different Mom roles available (Red, Blue, Green, Yellow)
- Lisa, aged 16-17, four different Lisa roles available (Red, Blue, Green, Yellow)
- Stranger, gender flexible role, four different Stranger roles available (Red, Blue, Green, Yellow)
- Ensemble (4 actors are needed for each character)

## Rehearsal Info

Not all actors are required every day. We will rehearse on Zoom the following days:

- “Enrichment Time” 3:15-3:50 Mondays, Tuesdays, Thursdays, and Fridays
- “Enrichment Time” 1:50-2:45 Wednesdays
- Some afternoons during “Asynchronous Learning” time, depending on cast availability
- Some evenings, depending on cast availability



A photograph of a train at a station platform. The train is on the left, with its doors open. The platform is on the right, with a yellow line and a tactile paving strip. A title overlay is in the center, featuring a train icon, the word 'Tracks', and a downward arrow.

# Tracks

By Peter Tarsi

Directed by Rosy Allen and Gabi Adams

# TRACKS

By Peter Tarsi

Directed by Rosy Allen and Gabi Adams

## Plot Summary

A group of strangers meet in a dirty subway station who all claim to be in different cities. Soon they learn there is no way out of the station, and the unfortunate truth is told to them: they are all dead. Since subway stations have two sides, they reason the train leaving from one platform must be bound for heaven, while the train leaving from the other platform must be bound for hell. But which platform are they on? They reflect upon their lives, recalling and confessing past deeds of which they are not proud, hoping to figure out which platform is which. As the subway train finally approaches, they must decide whether to stay and ponder their actions further, or to have faith and climb aboard to their final destination.

## Character Descriptions

- THE HOMELESS GIRL, 20, female, nb, runaway, been on the train platform longer than anyone else .
- THE OLD MAN, early 80s, male, war veteran.
- THE LAWYER, late 30s, any gender (written she/her), prosecuting attorney, very hard on herself
- THE PROFESSOR, early 50s, any gender (written he/him), literature teacher, extremely dedicated to his job.
- THE NUN, aged 65-85, female, used to be a bit of a troublemaker and became a nun to make up for it
- THE BUSINESSWOMAN, mid-30s, female, married with two kids, went back to work after her husband lost his job
- THE BUSINESSMAN, mid-40s, male, father of two teenage daughters,
- THE HIGH SCHOOL GIRL, aged 17-18, female, senior in high school, top of her class, dating HIGH SCHOOL BOY
- THE HIGH SCHOOL BOY, aged 17-18, male, senior in high school, not great at school, clings to his girlfriend HIGH SCHOOL GIRL
- THE WAITRESS, late 30s, single mother, has moved from job to job trying to provide for her daughter

## Rehearsal Info

Not all actors are required every day. We will rehearse on Zoom the following days:

- “Enrichment Time” 3:15-3:50  
Mondays, Tuesdays, Thursdays, and Fridays
- “Enrichment Time” 1:50-2:45  
Wednesdays
- Some afternoons during  
“Asynchronous Learning” time,  
depending on cast availability
- Some evenings, depending on cast  
availability

Directed by Andon Murphey & Jay Wirgin

Written by Ben O'Connell

# SPACE FORCE

The title "SPACE FORCE" is rendered in a bold, white, 3D blocky font. A yellow five-pointed star is positioned in the upper right corner of the letter 'A' in "SPACE". The text is set against a dark blue space background filled with numerous small, distant stars. At the bottom of the frame, a bright light source, likely the sun, is partially obscured by the horizon of a planet, creating a strong lens flare and illuminating the scene from below.

# SPACE FORCE

By Ben O'Connell

Directed by Aidan and Jay

## Plot Summary

*The Space Force, created to combat threats from outer space, is a useless sector of national defense. When General Army Man informs everyone that the space force is getting cut, the eclectic group of employees bands together to try and save it from the chopping block. All they have to do is prove that it's useful. In the face of adversity and disrespect the unlikely group faces a nearly impossible task, taking them deep into the heart of a laser tag arena. In the whirl of fog machines and neon lights, its revealed that perhaps there's more to the Space Force employees than what meets the eye, and that there might be something bigger at play in the universe.*

## Character Descriptions

- SAPKOWSKI (sap-koff-ski): age, gender possibilities, The jaded, unenthusiastic second leader of Space Force
- COLONEL SPACEMAN: age, gender possibilities, Authoritative and inspiring, but somewhat insecure first leader of Space Force
- SIMPSON: The optimistic, ambitious new cadet of Space Force.
- MULLER: The happy-go-lucky numbskull rocket scientist of Space Force
- ESPOSITO: Intelligent and straight-laced researcher for Space Force, hates her job.
- BROGDON: Very stressed out, nervous accountant for Space Force.
- ZORGON: Robotic and acts very strange. An accountant for Space Force.
- GENERAL ARMY MAN: Thinks Space Force is a joke. Bosses Sapkowski around.
- POLICE SCANNER VOICE 1: a traffic cop
- POLICE SCANNER VOICE 2: a police dispatch operator
- FUN RUINER: Ruins fun. Brings his own equipment to lazer tag

## Rehearsal Info

Not all actors are required every day. We will rehearse on Zoom the following days:

- “Enrichment Time” 3:15-3:50 Mondays, Tuesdays, Thursdays, and Fridays
- “Enrichment Time” 1:50-2:45 Wednesdays
- Some afternoons during “Asynchronous Learning” time, depending on cast availability
- Some evenings, depending on cast availability



BY NICOLA PEARSON

# SAVING NATURE

By Nicola Pearson

Directed by Alice Watson and Ari Lazer

## Plot Summary

A forest has been torn down for the future of a grocery store, and Mother Nature the goddess she is, finds herself hopelessly trapped under freshly poured concrete. Two teenagers, Schyler and Cai expected to be dubious skateboarders come bearing trowels and baby trees. Together, they work to help free Mother Nature before an unexpected logging guard comes to visit. Will the teens be dragged away, leaving Mother Nature to drown in gravel encrusted despair or will Nature be saved?

## Character Descriptions

- Nature, any age , Female, Mother, diva.
- Sonny, any age, Female , the sun, natures right hand lady, bright and cheery.
- Shyler, Any gender, teenager, Intelligent and determined.
- Cai, any gender, teenager, Friends with Shyler, Smart and sometimes smart-mouthed.
- Dustin, early 50's, male, works for logging company, antagonist, not so quick, but he catches up.
- Cloud, Youth, Any gender, natures assisting friend.
- Lightening 1, youth, Any gender, Nature's children
- Lightening 2, Youth, Any gender, Nature's children
- Thunder, Youth, Any gender, Nature's children
- Rain, Youth, Any gender, Nature's children, no lines.

## Rehearsal Info

Not all actors are required every day. We will rehearse on Zoom the following days:

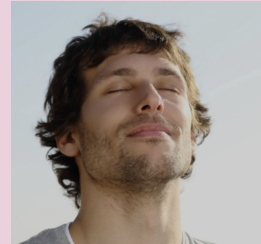
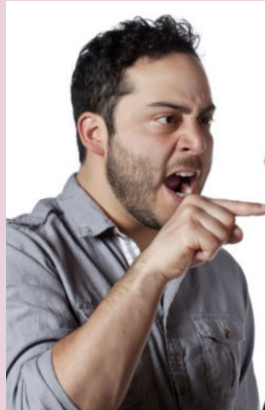
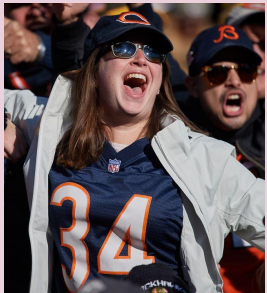
- “Enrichment Time” 3:15-3:50 Mondays, Tuesdays, Thursdays, and Fridays
- “Enrichment Time” 1:50-2:45 Wednesdays
- Some afternoons during “Asynchronous Learning” time, depending on cast availability
- Some evenings, depending on cast availability



# CHECK, PLEASE ✨

By Jonathan Rand

Directed by Azalea Teuton, Ali Rahmn, & Danielle Lobo



# CHECK, PLEASE

By Jonathan Rand

Directed by Ali Rahmn, Azalea Teuton and Danielle Lobo

## Plot Summary

Both Guy and Girl, desperate for a partner, go on a series of blind dates with different people. The extreme personalities of their suitors turn the blind dates into a series of hilarious shenanigans.

## Character Descriptions

- |                                                                                                                                                                                                                                                                                                                                                                                                                                                                                                                                                                                   |                                                                                                                                                                                                                                                                                                                                                                                                                                                                    |
|-----------------------------------------------------------------------------------------------------------------------------------------------------------------------------------------------------------------------------------------------------------------------------------------------------------------------------------------------------------------------------------------------------------------------------------------------------------------------------------------------------------------------------------------------------------------------------------|--------------------------------------------------------------------------------------------------------------------------------------------------------------------------------------------------------------------------------------------------------------------------------------------------------------------------------------------------------------------------------------------------------------------------------------------------------------------|
| <ul style="list-style-type: none"><li>• Guy, Mid-20s, male, goes on blind dates with many other characters, wants to find love.</li><li>• Girl, Mid-20s, female, goes on blind dates with many other characters, wants to find love.</li><li>• Louis, 20s, male, narcissist, very invested in himself, a Capricorn</li><li>• Melanie, 20s, female, is overtly invested in football, a huge fan of the Bears</li><li>• Ken, 20s, a guy, very over the top romantic to the point where it's creepy</li><li>• Mary, 20s, has her relationship with Guy already figured out</li></ul> | <ul style="list-style-type: none"><li>• Mark, 20s, walk-on, wears questionable date attire...</li><li>• Pearl, 20s, kleptomaniac</li><li>• Tod, 5, a little boy who wants a girlfriend</li><li>• Sophie, 90s, walk-on, a very old woman</li><li>• Brandon, 20s, a gay man method acting as straight</li><li>• Linda, 20s, a woman with many personalities</li><li>• Manny, 20s, the ultra-phobic, he's scared of everything</li><li>• Mimi, 20s, a mime!</li></ul> |
|-----------------------------------------------------------------------------------------------------------------------------------------------------------------------------------------------------------------------------------------------------------------------------------------------------------------------------------------------------------------------------------------------------------------------------------------------------------------------------------------------------------------------------------------------------------------------------------|--------------------------------------------------------------------------------------------------------------------------------------------------------------------------------------------------------------------------------------------------------------------------------------------------------------------------------------------------------------------------------------------------------------------------------------------------------------------|

## Rehearsal Info

Not all actors are required every day. We will rehearse on Zoom the following days:

- “Enrichment Time” 3:15-3:50 Mondays, Tuesdays, Thursdays, and Fridays
- “Enrichment Time” 1:50-2:45 Wednesdays
- Some afternoons during “Asynchronous Learning” time, depending on cast availability
- Some evenings, depending on cast availability



# Something like Dying



Written by Grace Molinaro

Directed by Francesca Flamini & Milo Kennedy

# Something Like Dying

By Grace Molinaro

Directed by Francesca Flamini & Milo Kennedy

## Plot Summary

As the end of the world quickly approaches, six strangers find themselves in a support group seeking some sort of outlet. As the weeks dwindle, their relationships with each other and the world grow, regress, and change always in the shadow of their impending fiery doom.

## Character Descriptions

- **Janie-** (f) The creator and moderator of the group. Careful with her words and always in touch with how the rest of the group is feeling. Sweet and likeable.
- **Maeve** — (f) The most outgoing of the group. She has an immediate animosity toward Wes as he points out harsh truths about her situation.
- **Wes** — (m) Often when Wes speaks it feels as though he's just speaking to himself. While the things he says can come off as rude, he is often only observing what he sees and rarely has any malicious intent.
- **Karson** — (m) The youngest of the group. Puts on a sort of 'none of this matters' attitude, but deep down he's just a scared kid who has more of a childlike innocence than the rest.
- **Marley** — (f) The oldest of the group and Jill's mother. Her mind always seems to be somewhere else. She speaks in broken sentences. Marley is 'living in the past'
- **Jill-** (f) Marley's daughter, sarcastic but loving

## Rehearsal Info

Not all actors are required every day. We will rehearse on Zoom the following days:

- "Enrichment Time" 3:15-3:50 Mondays, Tuesdays, Thursdays, and Fridays
- "Enrichment Time" 1:50-2:45 Wednesdays
- Some afternoons during "Asynchronous Learning" time, depending on cast availability
- Some evenings, depending on cast availability



they eat  
Sun  Sh

not Zebra

written by: Dana Murphy

directed by:  
Abbie Chipps and Justine De V

# **They Eat Sunshine Not Zebras**

**By Dana Murphy**

**Directed by Abbie Chipps and Justine De Vour**

## **Plot Summary**

**When a strange new plant shows up in the field, the grasses react with suspicion and contempt. They value uniformity over all else and fear the lawn mower will punish them for Sunny's unique appearance. Will they overcome their prejudices? Or will Sunny forever be an outsider and a scapegoat? (Despite its serious theme, this show is very much a comedy!)**

## **Character Descriptions**

**(all of these are very vague because we want to see what you bring to it! Keep in mind all of these characters are much deeper than surface value!)**

- **Sunny:** a happy go lucky dandelion
- **Brown Grass:** the oldest
- **One:** Knowing
- **Two:** Simple
- **Three:** Sunny's neighbor
- **Four:** Follower
- **Five:** Negative
- **Six:** Motherly
- **Seven:** The one with ideas
- **Eight:** Grumpy
- **Nine:** Clueless

## **Rehearsal Info**

**Not all actors are required every day. We will rehearse on Zoom the following days:**

- **"Enrichment Time" 3:15-3:50 Mondays, Tuesdays, Thursdays, and Fridays**
- **"Enrichment Time" 1:50-2:45 Wednesdays**
- **Some afternoons during "Asynchronous Learning" time, depending on cast availability**
- **Some evenings, depending on cast availability**



# THE NEST

*Jay Wirth*

*Directed by Jett Yasuda and David Hoffman*

# THE NEST

By Jay Wirth

Directed by Jett Yasuda and David Hoffman

## Plot Summary

Freddy is a high school boy who has been home schooled his whole life. Upon reaching high school, he decides he wants to go to an actual school. However, he quickly finds that even by going to school, his overprotective mother is holding him back from discovering himself.

## Character Descriptions

- Freddy, high schooler, male
- Mom, female, Freddy's mother
- Natalie, high schooler, female, Freddy's first real friend
- Tucker, high schooler, male, Natalie's long time friend
- Sarita, female, teacher
- Sarah, high schooler, classmate, female
- Non-speaking ensemble roles available too!

## Rehearsal Info

Not all actors are required every day, and the schedule is flexible. We will rehearse on Zoom the following days:

- "Enrichment Time" 3:15-3:50 Mondays, Tuesdays, and Fridays
- "Enrichment Time" 1:50-2:45 Wednesdays
- Some afternoons during "Asynchronous Learning" time, depending on cast availability
- Some evenings, depending on cast availability



# STANDARDS OF BEAUTY



*Written by  
Elizabeth Heffron*

*Directed by Ona Alumbaugh, Ella Newborn, and Ariana Williams*

# *STANDARDS OF BEAUTY*

By Elizabeth Heffron

Directed by Ona Alumbaugh, Ella Newborn & Ariana Williams

**Trigger warnings: Disordered eating, issues with body image**

## **Plot Summary**

April Blue, a near-perfect teenage beauty queen is haunted by four spirits (Moonless, Sober, Raven, and Bone) that represent her deepest insecurities. The pageant life leads April to struggle with the pressure of conventional standards of beauty, male validation, disordered eating, and the loss of innocence. While performing, the Spirit's intruding thoughts cause April to become unhinged on stage.

## **Character Descriptions**

- April Blue, age 17, Female, teen beauty queen crowned “Miss Teenage East Commerce”, presents confident to the judges but deals with the pressure of her inner insecurities.
- Moonless, age 17, Female, one of four spirits who haunt April, embodies April's struggle with conventional beauty standards.
- Sober, age 17, Female, one of four spirits who haunt April, embodies the corruption of April's innocence.
- Raven, age 17, Female, one of four spirits who haunt April, embodies April's yearning for male validation.
- Bone, age 17, Female, one of four spirits who haunt April, embodies April's struggle with disordered eating.

## **Rehearsal Info**

As this is a small ensemble show, actors are required most days. We will rehearse on Zoom the following days:

- “Enrichment Time” 3:15-3:50 Mondays, Tuesdays, Thursdays, and Fridays
- “Enrichment Time” 1:50-2:45 Wednesdays
- Some evenings, depending on cast availability
- Some weekends, depending on cast availability